



Maryland State Geographic Information Committee

GEO SPATIAL MARYLAND

VOLUME 2, ISSUE 1

JANUARY 2008

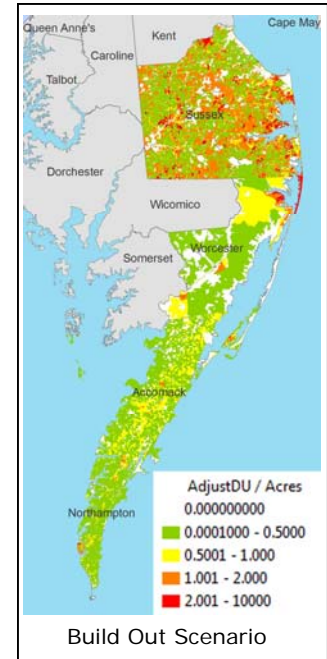
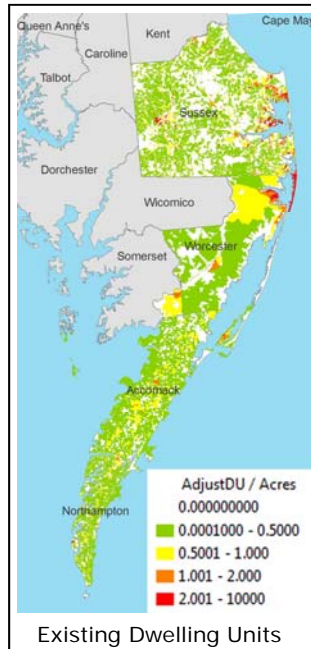
Committed to Excellence in the Development and Coordination of Geographic Information Technologies

Coastal Bays Program Uses GIS to Illustrate Build Out Concerns

By Dave Wilson Jr.—Maryland Coastal Bays Program

Capitalizing on work it started in 2005, the Coastal Bays Program continues to spearhead efforts to create more regional awareness of issues surrounding growth, water quality, and wildlife.

In response to the rapid development occurring around the coastal bays of Delaware, Maryland and Virginia, the Coastal Bays Program has convened a regional planning effort comprised of Sussex, Worcester, Accomack and Northampton planners and decision makers. With help from a \$60,000 grant from the Maryland Department of Natural Resources and NOAA, the Delmarva Atlantic Watershed Network (DAWN) formed to help each state



tackle its growth needs, learn from other states, and broaden their scope to look at wildlife and water quality from a shore-wide perspective.

After a year of work, the three states held workshops in December 2007 to let officials know what their counties would look like when completely built out. The build out scenarios look at how current planning and zoning laws would affect prime farming soils, green infrastructure, rare, threatened and endangered species areas, flood plains, sewer service areas and nutrient loads by watershed. Consultant Chuck Donley was hired to collect the data and create build out

scenarios for each county.

With an additional \$10,000 contributed by both Delaware and Virginia, DAWN hopes to hold a Policy Workshop next winter. The workshop will aim at creating regional growth scenarios by using a Reality Check-style mapping exercise with planners, builders, and decision makers. It will look at how public policies differ among states as they relate to ecology and water quality and look for collaborative solutions. Hopes are that the workshops will culminate in a plan for the region to protect water quality and wildlife over the long term.

For more information go to <http://thedelmarvanetwork.org>.

INSIDE

GIS DAY CELEBRATIONS	2
GIO'S CORNER	3
IMAGERY ROI STUDIED	3
MACO WINTER CONFERENCE	4
COMING EVENTS	4

GIS Day Celebrated Across Maryland Through School Outreach Efforts

Howard County Middle Schoolers Get Attention from Towson's CGIS

By Susan Wooten—Towson University Center for GIS

On November 14, a team of GIS Specialists at Towson University's Center for GIS (CGIS) gave sixth- and seventh-grade students at Ellicott Mills Middle School in Howard County a full day of hands-on experience with GIS activities that were based on their Social Studies Essential Curriculum.

Sixth-grade students who are studying North Africa and the Middle East used GIS to explore the potential impact on the physical environment and the human and wildlife populations if a dam were to be built on the Nile River.

Students in the seventh grade who are learning about Europe used a map and a set of guidelines to plan the shortest route for a helicopter tour of specific European monuments. The GIS team received planning assistance from Towson University's College of Education. Material help

came from ESRI, who contributed a variety of items for the tote bags that each student received. Each student also received a Certificate of Participation, as well as a special *GIS Rules!* bookmark created by CGIS. Most importantly, the interactive demonstrations illustrated the importance of geography in our everyday lives and taught the students to use GIS to explore and analyze information in new ways.



Frederick County Targets High School Students

By Tara Wolf, GIS Specialist—Frederick County

November 14, 2007 was proclaimed National GIS Day for Frederick County by the Board of County Commissioners. The BOCC recognized the importance of GIS and geographic awareness in the community and encouraged the public to participate in GIS Day activities. Statewide, GIS was recognized as aiding the community in many ways including: improving education and public safety, assisting in conservation of natural resources, and providing tools for improved analysis and decision making.

Enterprise GIS staff members participated in GIS Day on November 14 by presenting to students at Urbana High School. Advanced Placement



Environmental Science and Human Geography students listened to the presentation which covered current projects for Frederick County, basic concepts and fundamental elements of GIS, and real world applications of GIS focusing on human geography and environmental impacts.

Enterprise GIS Project Manager BangYeon Kim highlighted new county projects that are underway including orthophotography, parcel, centerline and addressing, Pictometry and roadway imagery. GIS Specialist Chris Corbelli went over basic concepts such as scale, precision verses accuracy, and sources of data before walking through an example of GIS Analysis. Tara Wolf, GIS Specialist, illustrated GIS population growth models as well as examples of environmental research and how they utilized GIS in their studies.

GIO'S CORNER

This column is a new contribution to the MSGIC newsletter.

Several recent activities are worthy of note. Maryland has a new Chief Information Officer. His name is Eliot Schlanger and he served in Mayor O'Malley's administration in Baltimore. He was appointed by Governor O'Malley Nov. 30, 2007. The Governor also announced that he would pursue establishing a Department of Technology in the 2008 legislative session.

These two actions should be positive steps for the use of spatial technology in Maryland. I look forward to working with Mr. Schlanger in his new role. If you get the opportunity, please introduce yourself to him. He gets GIS and its value to state and local government decision making.

Progress continues in establishing a statewide base map. Coined MD iMaP, this resource will support state accountability processes – StateStat and BayStat – and eventually it will be made available to local government agencies as well. While still under development it will eventually use both state and local databases, requiring new data sharing relationships. MSGIC is and will be a key force in bringing about these new relationships. Stay tuned to more on this.

Until next time . . .

Kenny Miller

ROI for Aerial Imagery Partnership Studied

In April 2007, the acquisition of digital aerial imagery of Maryland necessary to federal, state and local governments entered new territory by collecting imagery for the entire state. Funds from a variety of sources were pooled to reduce costs and leverage resources that met common needs. The supporting argument for the project was that doing so actually saved dollars and increased value by meeting multiple needs. During the same period, Delaware pursued similar efforts by pooling resources to collect imagery and detailed elevation data, and to produce land use and land cover data.

The Federal Geographic Data Committee (FGDC) became interested in documenting the return on investment (ROI) for these two data collection efforts using proven economic and accounting principles. So they partnered with Maryland and Delaware to document the costs and benefits. They contracted with the Geospatial Information and Technology Association (GITA) to work with the GIS communities in both states using a methodology GITA had developed over the last several years. State GIS coordinators Mike Mahaffie of Delaware and Kenny Miller of Maryland led efforts in both states to complete the ROI as directed by FGDC and GITA staff.

The process began with a web-based orientation session held on Nov. 15, 2007 in which more than 26 participants from both states learned of the project. On Dec. 3, 4, and 18,

participants in Maryland (representing one municipality, seven counties, four state agencies and one federal agency) attended two days of workshops and interviews to learn how to collect the information necessary to complete the ROI in which the costs in dollars and staff time to plan the project, manage the contract, collect, process and serve the data would be accounted for. Also collected would be the benefits gained by all the users of the data.

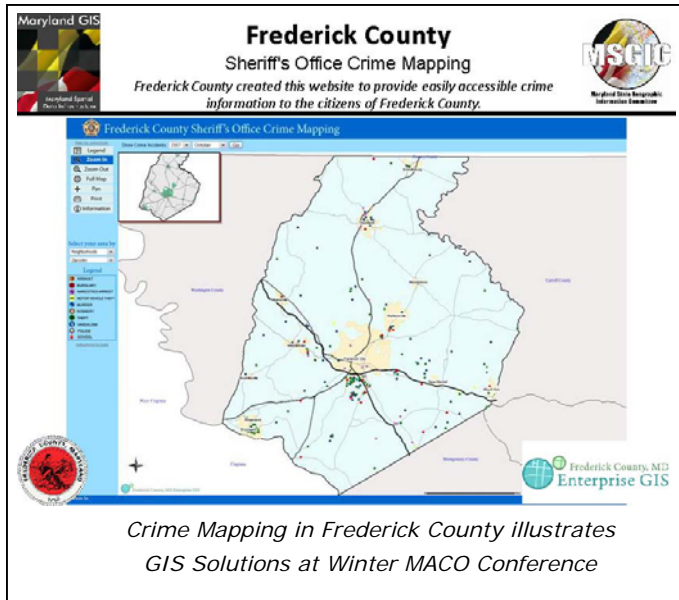
Follow-up meetings will take place in January to complete collecting the cost and benefit information. GITA analysts will take the information and perform ROI and related financial analyses for each contributor and produce a composite ROI extrapolated for the entire Maryland imagery project. This information will be combined with similar efforts underway in Delaware. The results should reveal the true costs and benefits of coordinated statewide imagery collection efforts. The goal will be to use the data to educate and inform the leadership at all levels of government of the true value of imagery and the return it provides. Armed with hard, defensible data in the language of fiscal and budget analysts, it is anticipated the results, speaking for themselves, will assist all spatial data managers in convincing policy makers that spatial data is cost effective and demonstrates a positive return on investment, especially when collected is collaborative and mutually supportive partnerships. Stay tuned for the results of these efforts.

MSGIC/TuCGIS Show Off GIS at Winter MACO Conference

By Marshall Stevenson, Enterprise GIS Manager—Frederick County

MSGIC and partner Towson CGIS were among exhibitors at the MACo Winter Conference early in January. The conference theme, "Navigating the Storm," focused on the complexities of water and transportation, and growth management in challenging fiscal times. GIS is a powerful tool for county government, and counties throughout Maryland are using GIS for a broad range of applications that can help elected leaders find solutions to these challenges.

Several county GIS programs were on display, showcasing successful GIS projects. The goal of the exhibit was to educate County leaders on the many ways that GIS moves beyond the "picture" to help find solutions.



Chair

Marshall Stevenson
mstevenson@fredco-md.net

Chair Elect

Ken Miller
kenmiller@dnr.state.md.us

Past Chair

Jeff Edgin
Jeff.Edgin@co.saint-marys.md.us

Secretary

Virginia Peterman
vpeterman@howardcountymd.gov

Data & Resource Subcommittee

Jason Mielke
Jason.mielke@sage-mgt.net

Outreach & Education Subcommittee

Kevin Boone
kboone@dnr.state.md.us

Education Caucus

Matthew Felton
mfelton@towson.edu

Local Government Caucus

Caroline Gaulke
ITGAUL90@aacounty.org

Robert Slivinsky Jr.
rslivinsky@howardcountymd.gov

Regional Council Caucus

Charlene Howard
charlene@mwcog.org

Brad Spittel
bspittel@baltometro.org

State Government Caucus

Lindsay Major
lmajor@gov.state.md.us

Michael Stranovsky
mstranovsky@mdp.state.md.us

Federal Government Caucus

Roger Barlow
rbarlow@usgs.gov

Private Sector Caucus

Alison Rice
arice@esri.com

Newsletter

Kathleen O'Brien
obrienkm@co.cal.md.us

www.msgic.state.md.us

COMING REGIONAL EVENTS

January

16 *MSGIC Winter Quarterly Meeting
 Howard Co. Community College*

30 *Western MD User Group
 Washington County*

February

13 *MSGIC Exec. Committee Meeting
 Howard County*

20-22 *ESRI Federal User Conference
 Washington, D.C.*

27 *Central MD User Group
 Rockville*

March

9-12 *MSGIC Mid-Year Conference
 Annapolis*

12 *MSGIC Exec. Committee Meeting
 Howard County*

17-18 *TUGIS Annual Conference
 Towson University*

April

9 *MSGIC Exec. Committee Meeting
 Howard County*

18 *MSGIC Spring Quarterly Meeting
 Salisbury University*

30 *Western MD User Group
 Frederick County Sheriff's Office*

May

14 *MSGIC Exec. Committee Meeting
 Howard County*

28 *Central MD User Group
 Morgan State University*

June

11 *MSGIC Exec. Committee Meeting
 Howard County*

22-25 *MD Municipal League Conference
 Ocean City*