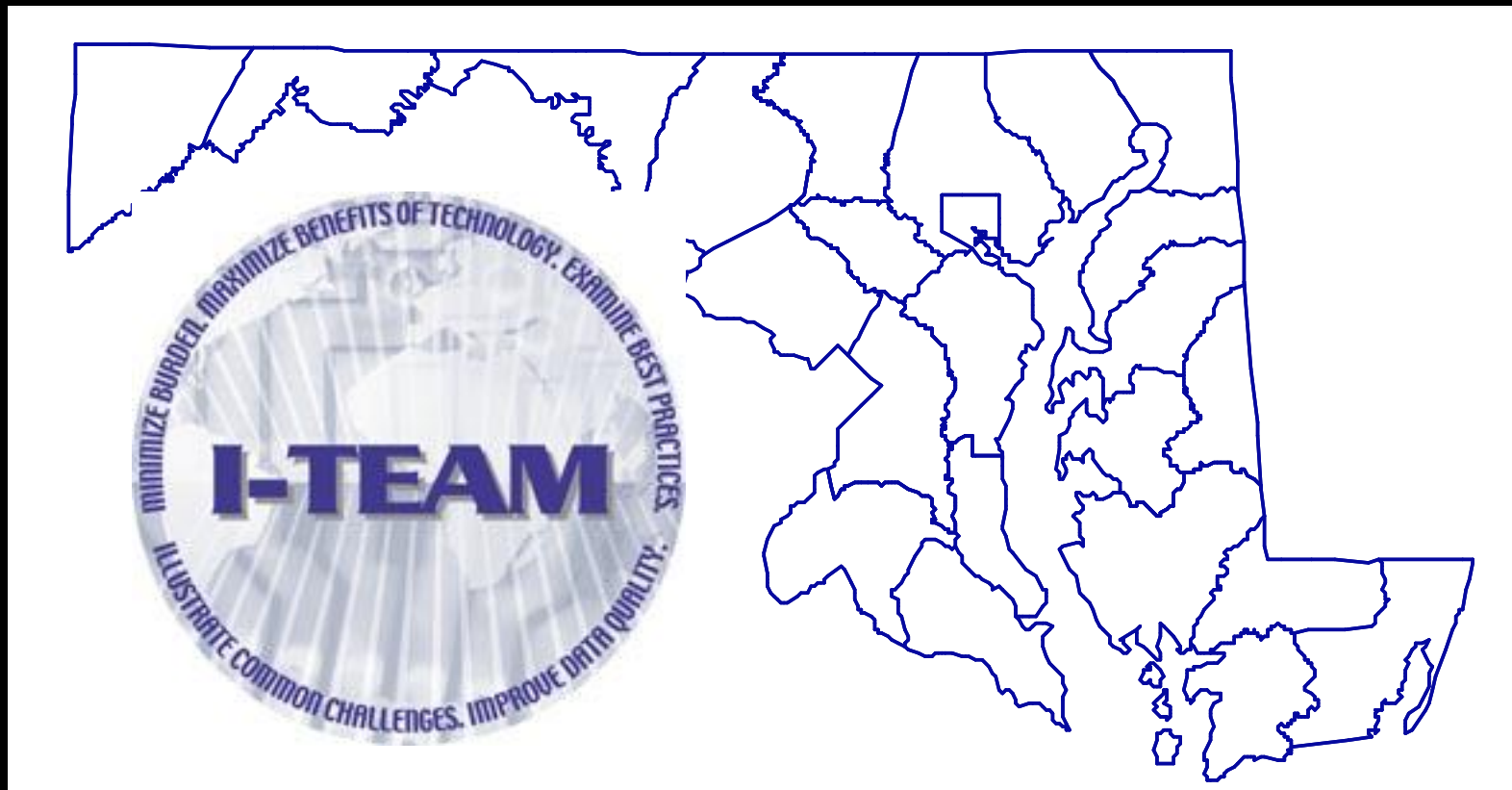


Maryland's I-Team Plan



Maryland State Geographic
Information Committee (MSGIC)



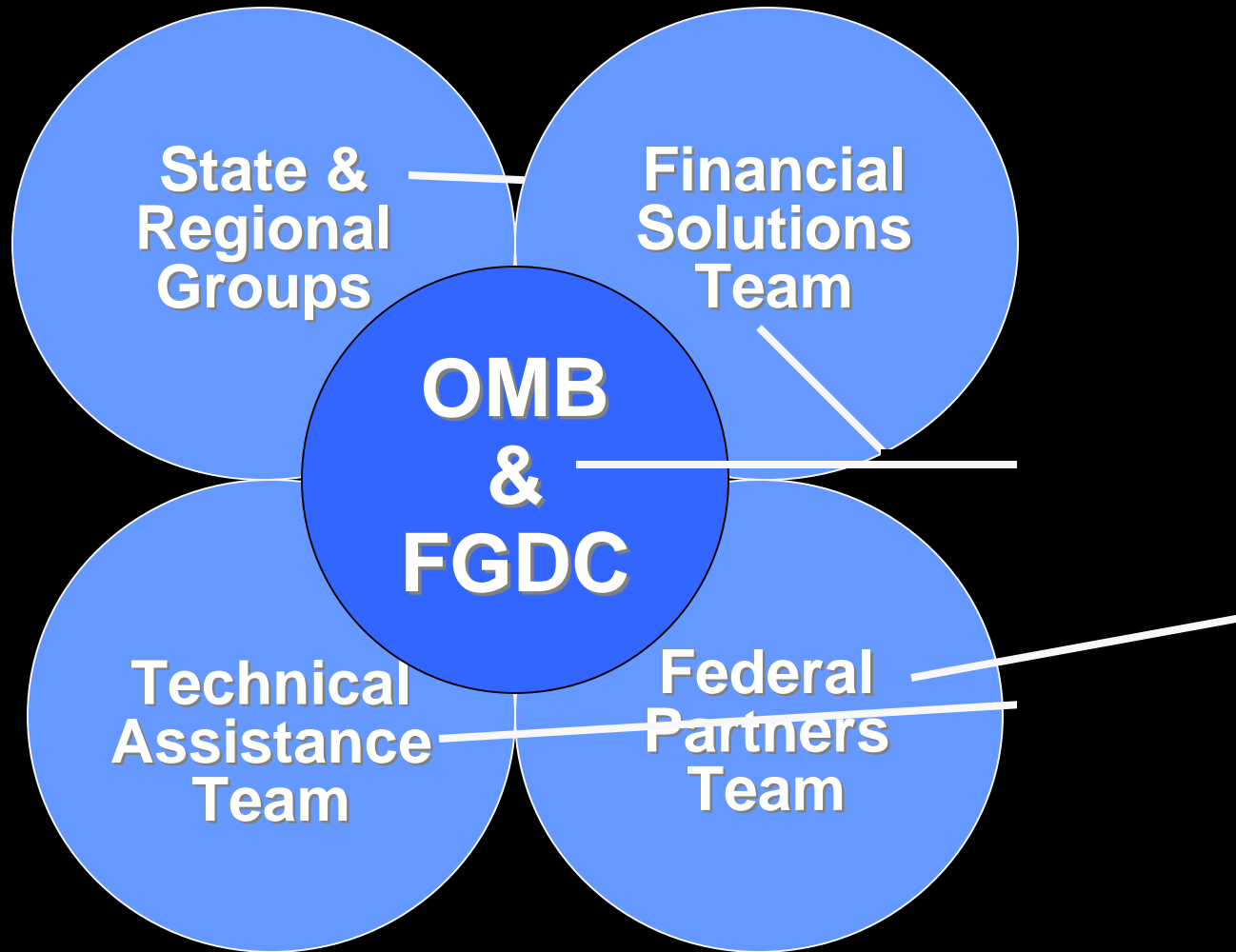
- a committee of 180 people
- includes representatives from federal, state, local, education, private and public sectors in Maryland
- offers a forum to debate and educate
- establishes non-binding standards, policies and guidelines
- provides interagency coordination opportunities
- fosters development of coordinated management plans

What are I-Teams?



- initiated in July 2000
- by the White House Office of Management and Budget (OMB)
- OMB proposed that each State create an Implementation Team or I-Team
- the Federal Geographic Data Committee (FGDC), Council for Excellence in Government, National States Geographic Information Council (NSGIC), and National Association of Counties (NACO) all support the I-Team concept

How are I-Teams organized?



I-Teams were designed to help government and the private sector to:



- save money,
- migrate from existing legacy systems,
- make better use of existing resources,
- develop the business case for additional public and private resources, and
- promote development of the National Spatial Data Infrastructure (NSDI).

Technology is the **Engine** that drives **Smart Growth** and Maryland is the LEADER !

However, our existing **DATABASES** are becoming obsolete:



our **DATABASES** do not meet the needs of all users

Copyright 2000

VARGIS, LLC Eyemap



State and Local
Governments Need

State Government Produces

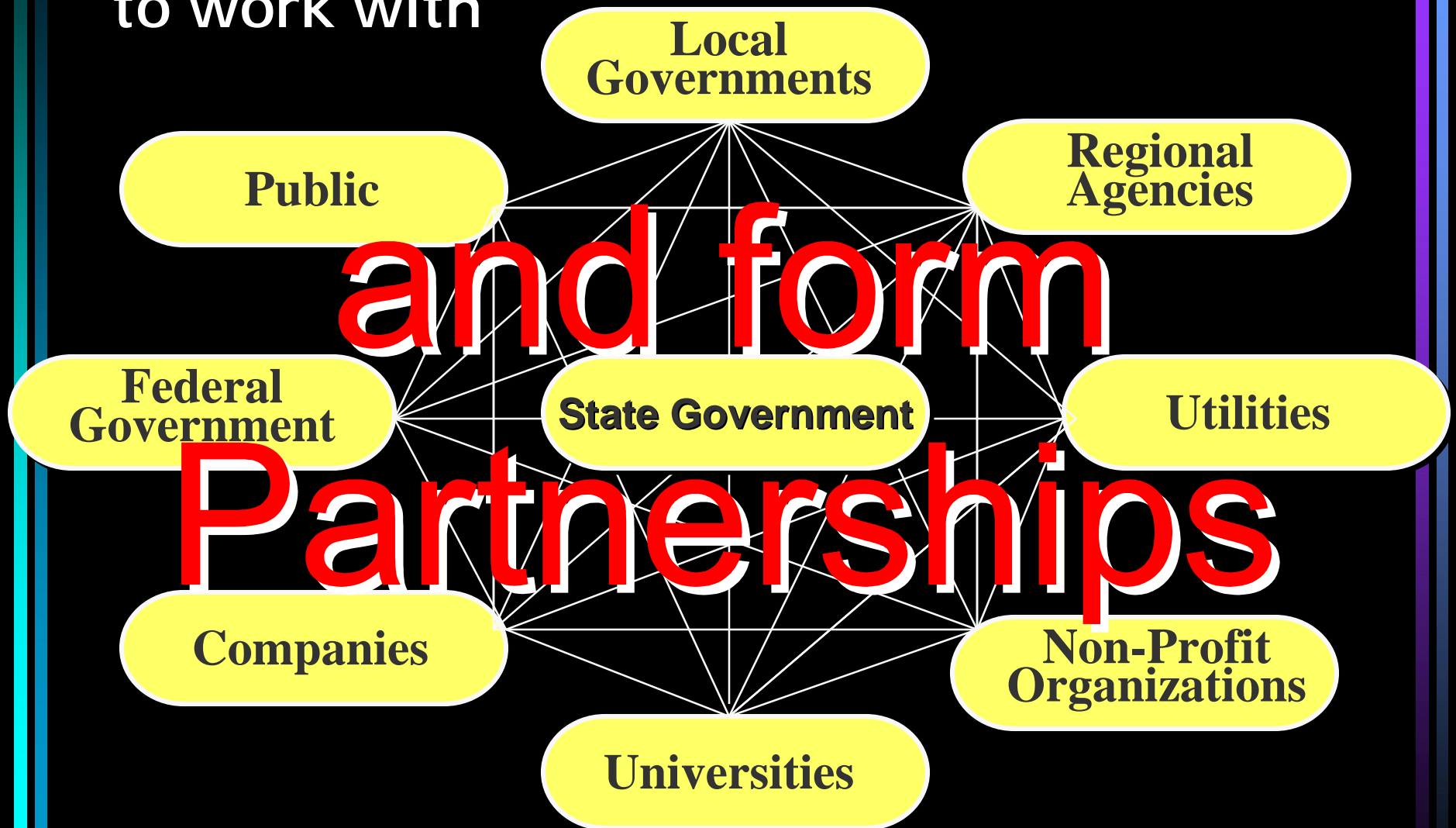
License Agreements

Copyright

Data Distribution
Policies & Charges

Our **Existing Policies** hinder
intergovernmental coordination

we have an opportunity
to work with



we can also -

**improve our ability to make
informed decisions
in the future**



Now for the **PLAN**, but
first, **PLEASE STAND UP**
for the next slide

Why ?

“Never trust an idea you come upon
sitting down.”

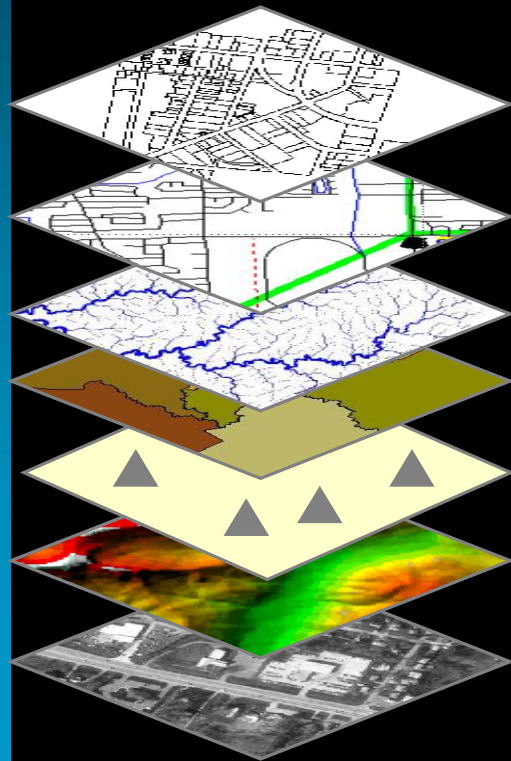
Friedrich Nietzsche (1844 -1900)

MSGIC's Six Point Plan to Make Smart Growth Smarter

- new mapping standard
- new Geographic Data Partnership Office
- budget adequate to meet Smart Growth technology needs
- new partnerships to leverage funding
- statewide standards & quality control
- oversight board and open participation

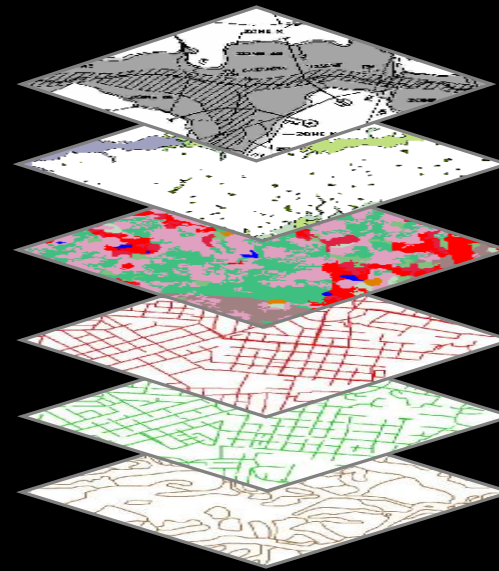
Creating a NEW large-scale Geographic Database

Framework Data



Land Ownership
Transportation
Surface Waters
Boundaries
Geodetic Control
Elevation
Aerial Imagery

Thematic Data



Crime Location
Wetlands
Land Use/Cover
Infrastructure
Communications
PFA's

1 inch = 200 feet

What is the I-Team's Proposal ?

Establish a new Geographic Data Partnership Office (GDPO)

- 12 positions at one of the following locations
 - National Center for Smart Growth Education and Research
 - Office of Smart Growth
 - Information Technology Office, DBM
- \$6 million contractual service budget

What will the GDPO staff do ?

- “Broker” partnerships for data production between public and private organizations
- Contract for data production
- Perform quality control inspections
- Distribute data
- Interface with E-Government needs
- Support MSGIC

OVERSIGHT BOARD

- **five members**
- 2 from MSGIC Executive Committee
- 1 from Smart Growth Sub-cabinet
- 1 from county government
- 1 from federal government

- **meet twice annually**

How does the State benefit from this investment ?

- by providing for future geographic data needs
- bringing together all partners to reduce the cost of data production and maintenance
- free and immediate access to quality data
- capability to respond to new issues
- increased ability to deal with federal mandates like GASB 34 and NPDES – Phase 2

Is it a good investment ?

- **ABSOLUTELY!**
- Cost/Benefit models for integrated GIS operations typically report a 4:1 return on investment
- We expect to see up to \$41 million of positive economic return for each year of this program

More importantly, however,

- government agencies operating in Maryland will be better coordinated than ever before,
- we can take better advantage of federal grant opportunities, and
- policy-makers dealing with future Smart Growth issues will be able to make better decisions and implement new programs



Getting a copy of the current
I-Team Plan is easy -

<http://www.msgic.state.md.us/publicat/MDITeamPlan.pdf>

Thanks for Listening



Any Questions ?